

ALIMAK SCANDO 650 FC-S

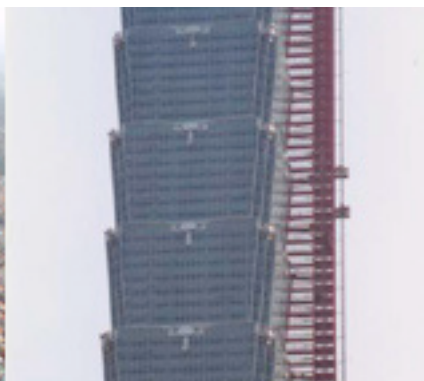
General specification

Spacious, high speed passenger/materials hoists for high rise construction

The ALIMAK SCANDO 650 FC-S range offers spacious, high speed passenger/materials hoists for high rise construction. Lifting heights of 250–400 m can be achieved with speeds up to 100 metres per minute. Hoist car capacities 2,400–3,200 kg per car in the standard range, increased load capacities upon request.



Payload capacity	2,400–3,200 kg
Speed	0–100 m/min.
Max. lifting height	250 m (Increased lifting height on request.)
Car width (internal)	1.5 m
Car length (internal)	3.2–3.9 and 3.9–4.6 m
Car height (internal)	2.3 m
Motor control	Frequency Control (FC)
No. of motors	3
Safety device type	GFD-II
Power supply range	400–500 V, 50 or 60 Hz, 3 phase
Type of mast	A-50, Tubular steel with integrated rack
Length mast section	1.508 m
Weight mast section with 1 rack	118 kg
Rack module	5



www.alimakhek.com

08.04.16, version 1

